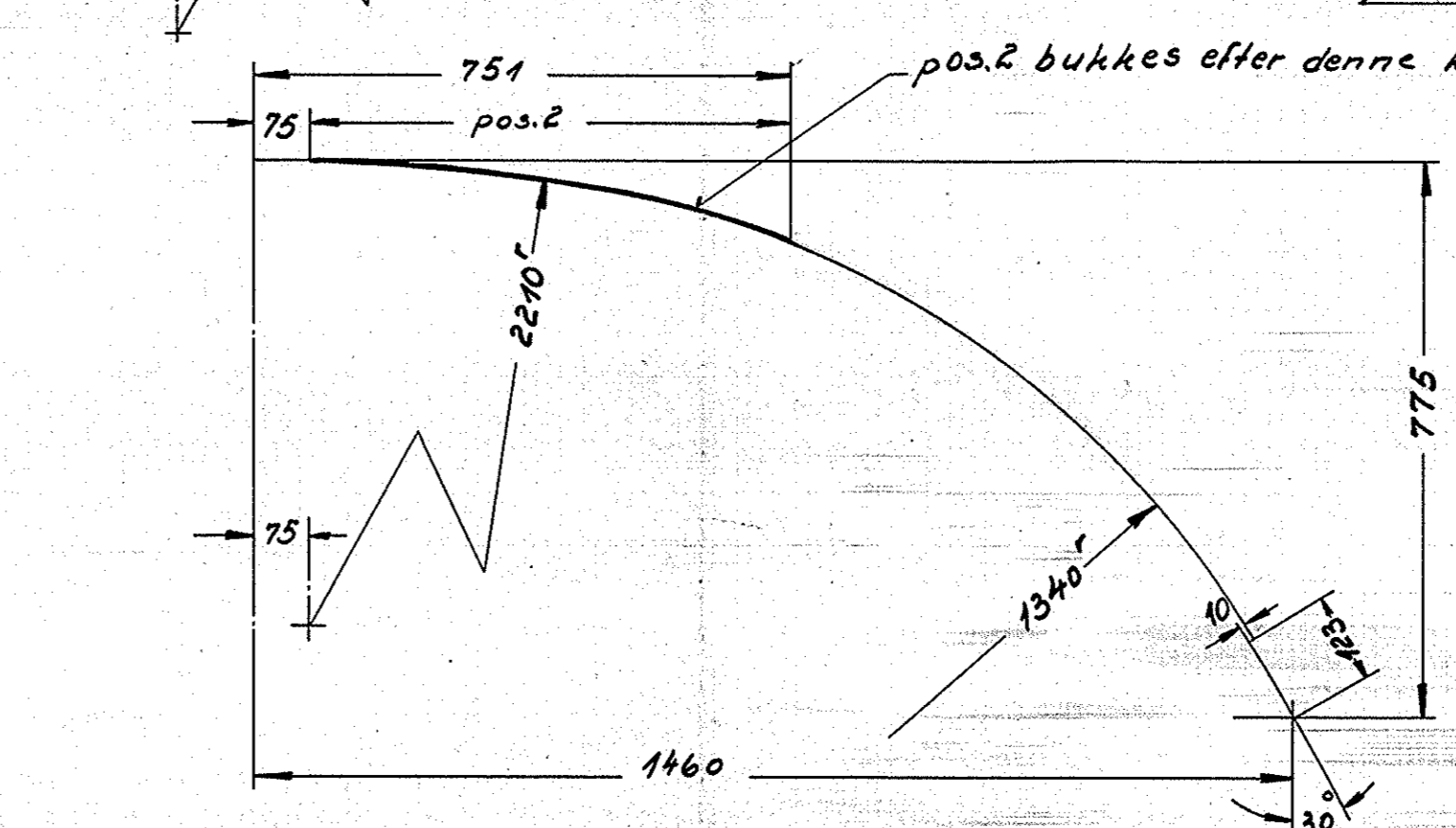
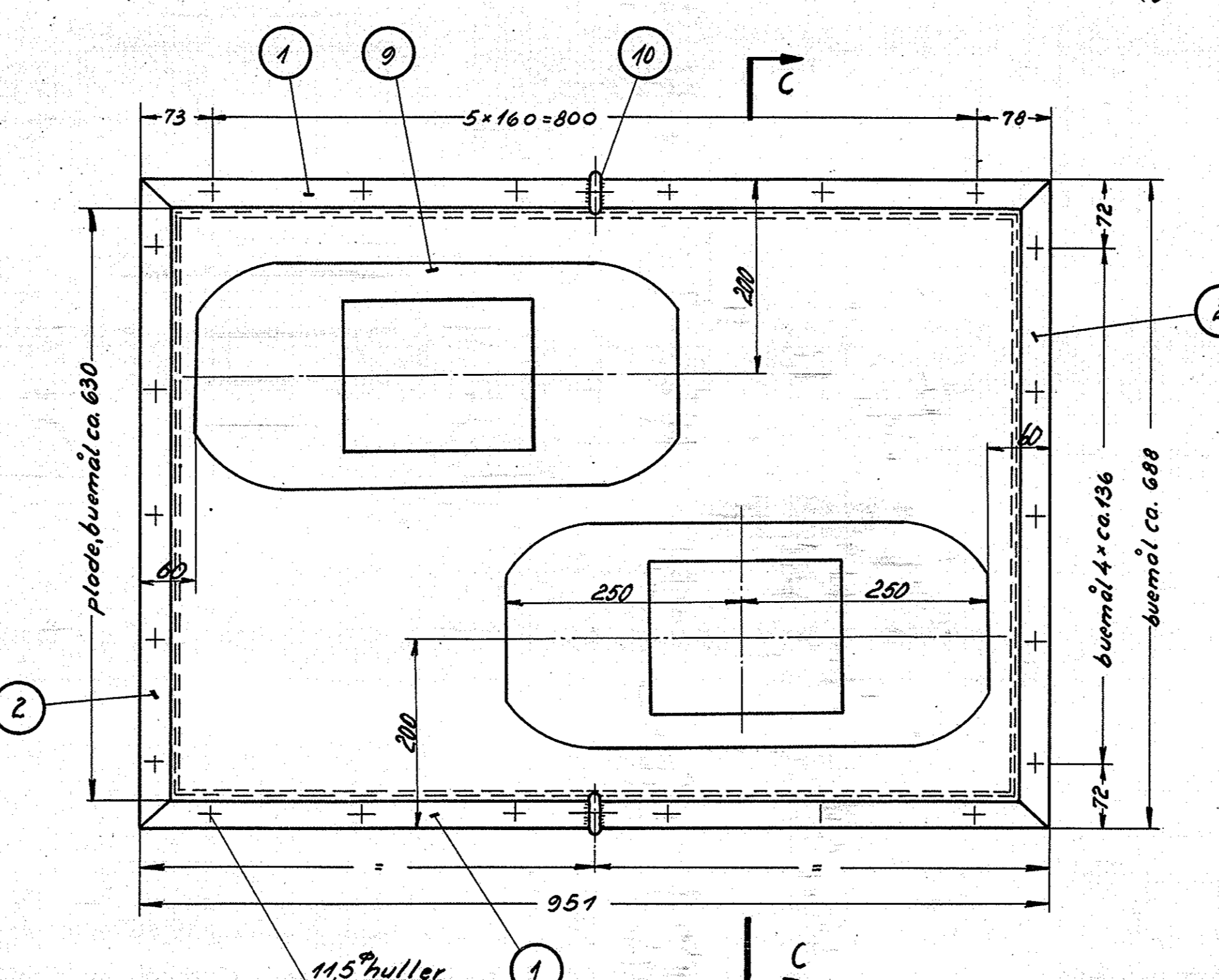
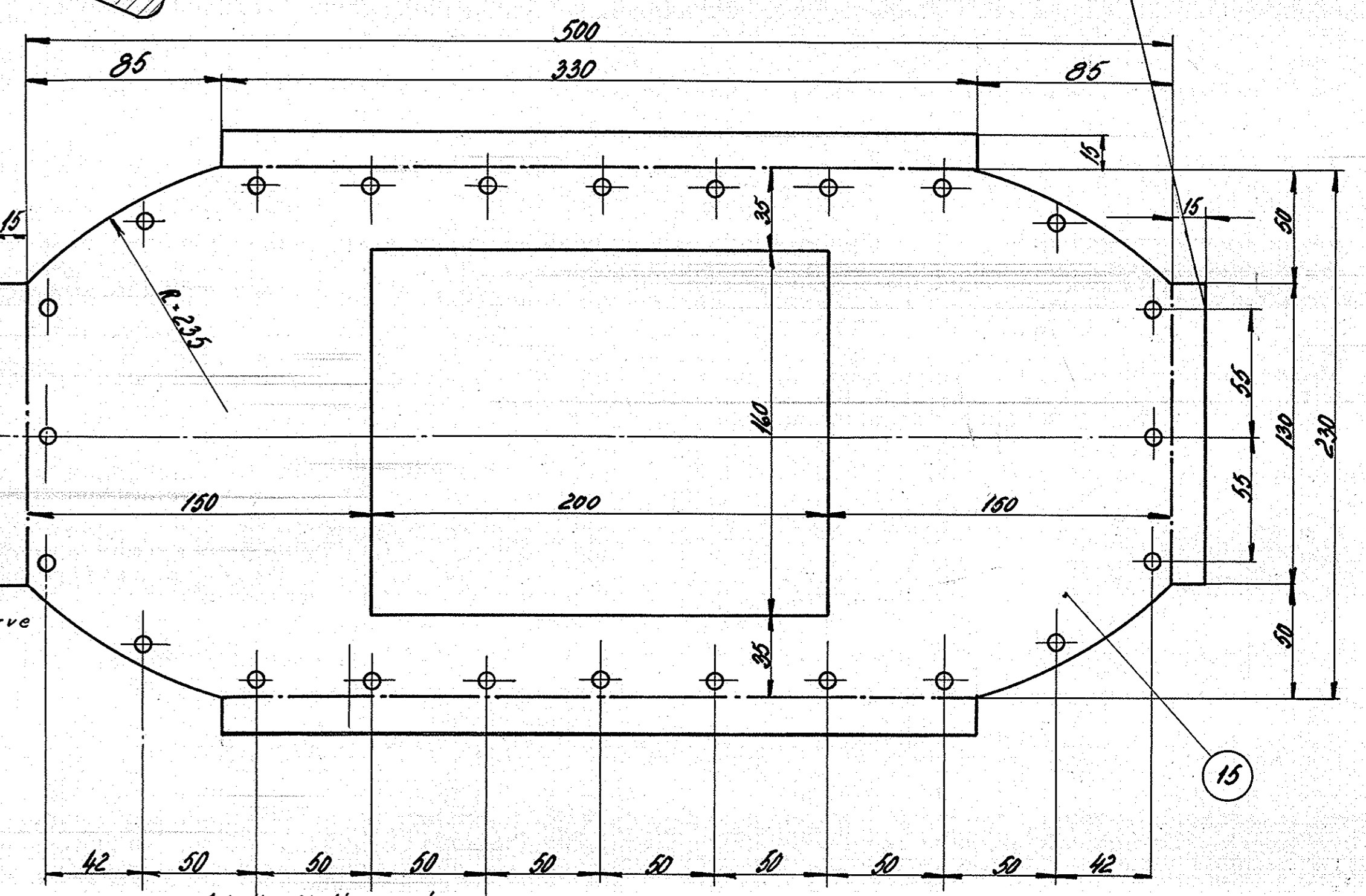
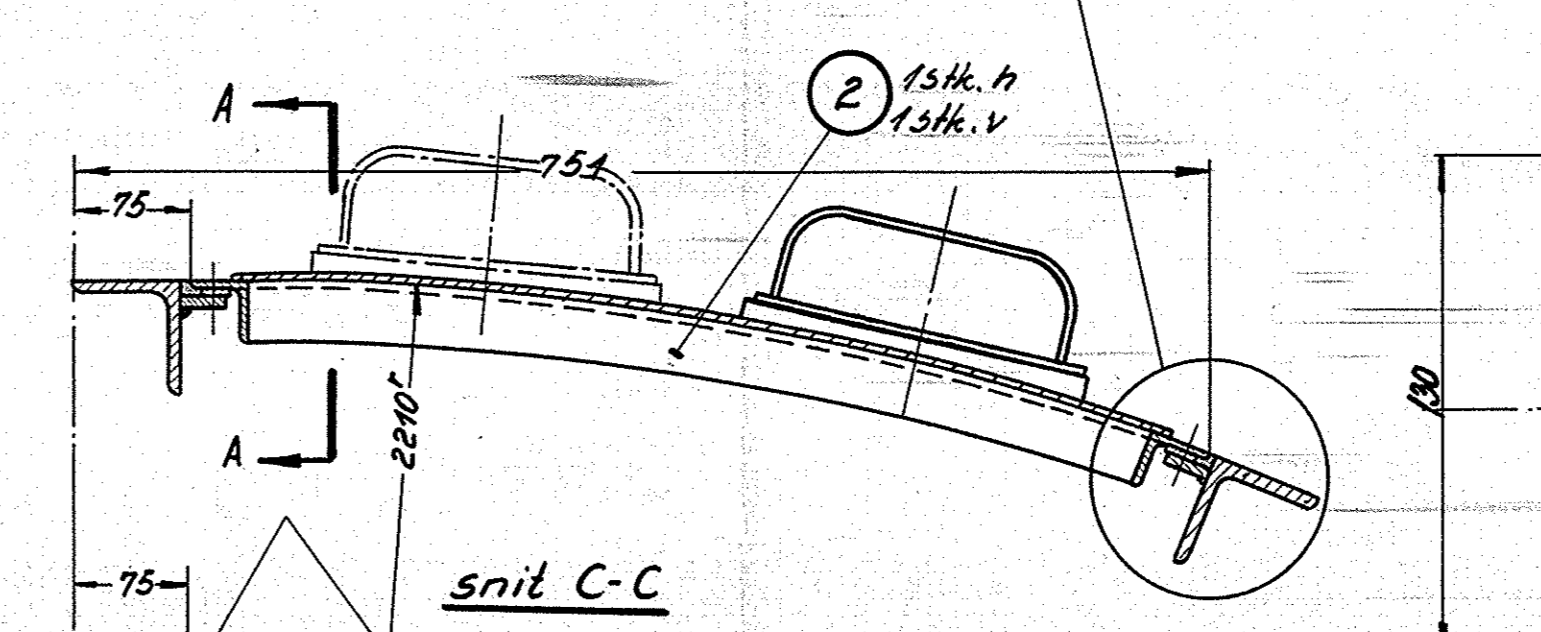
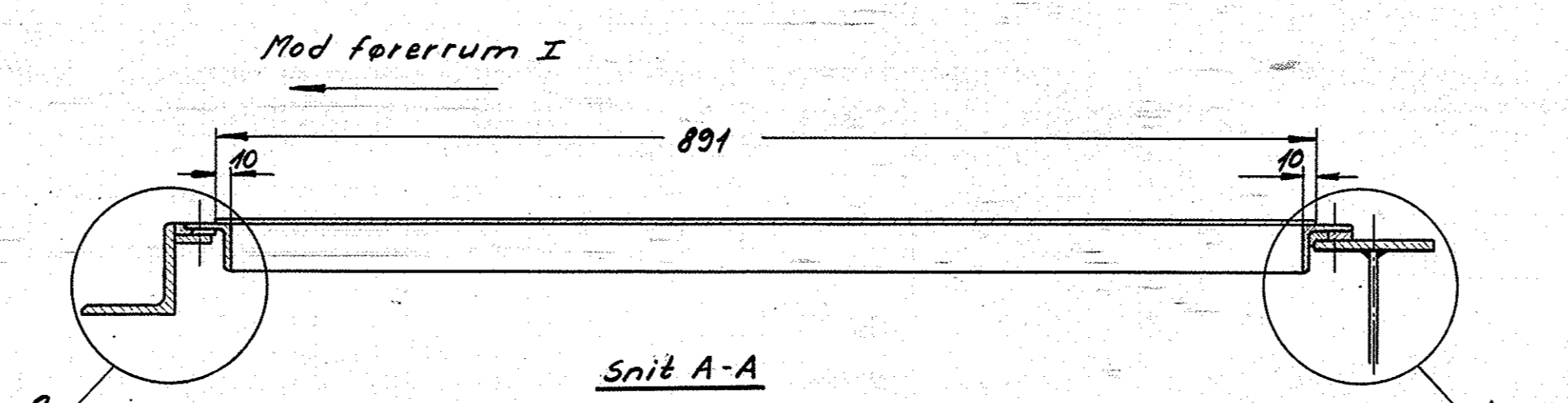
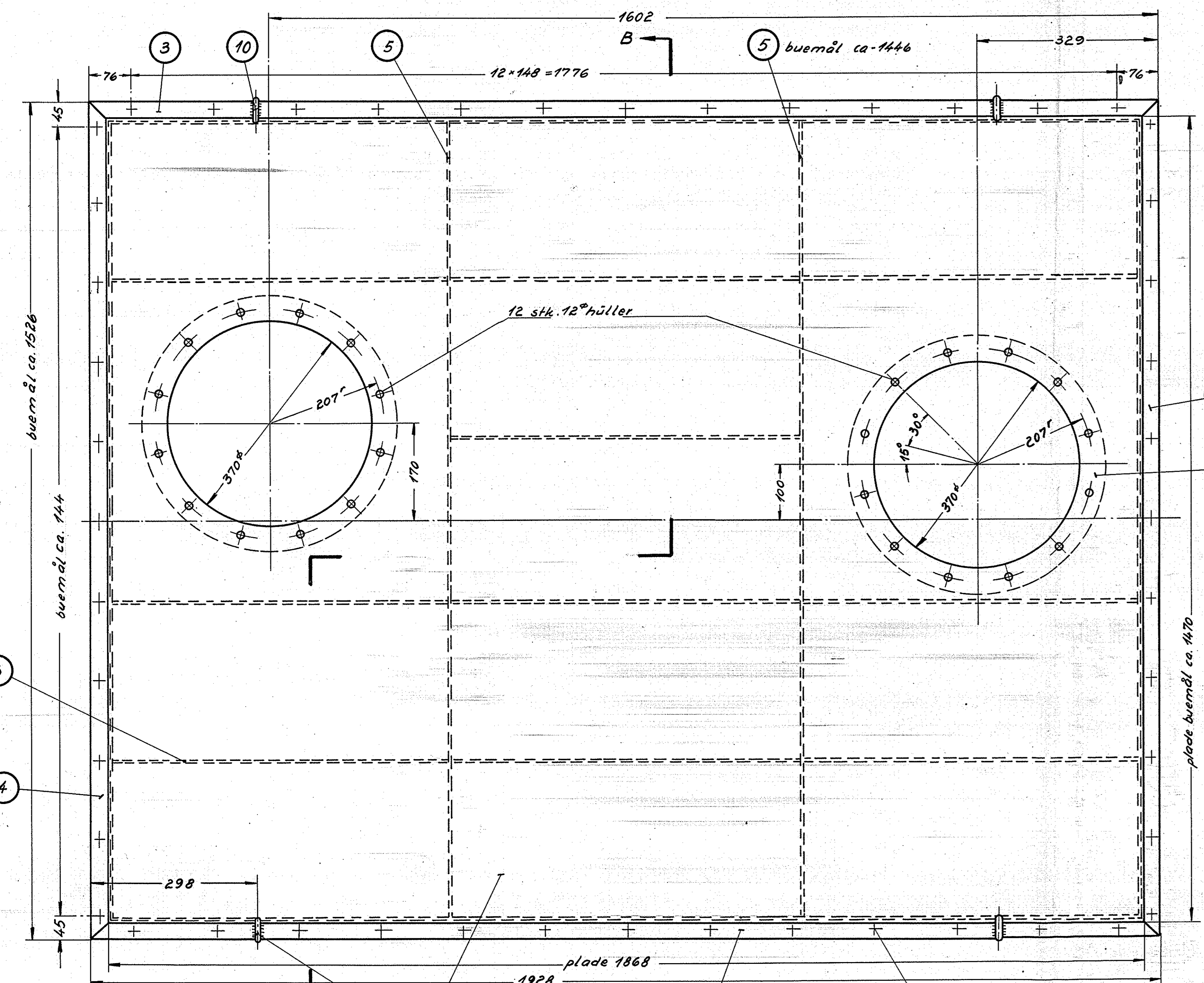
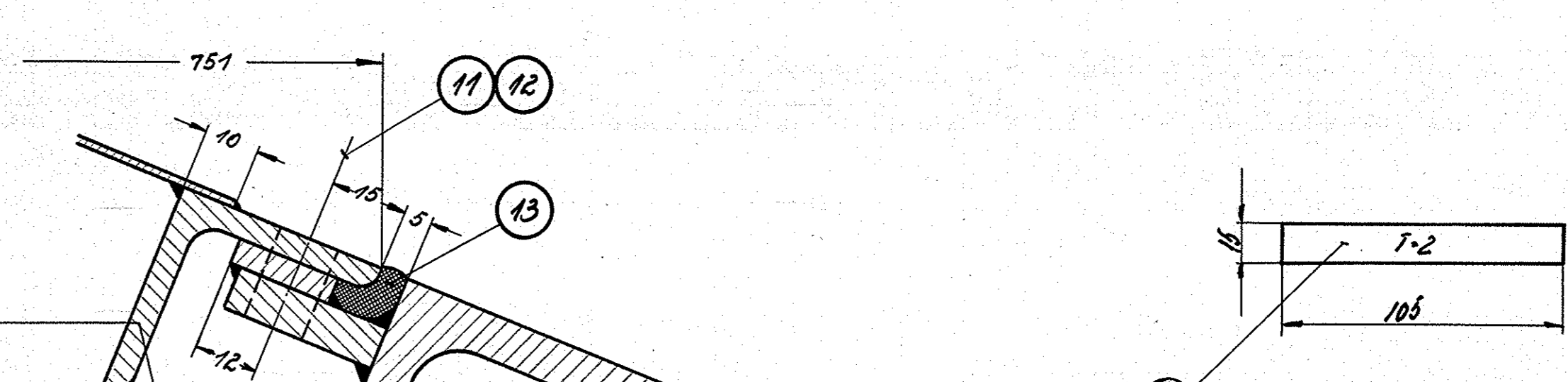
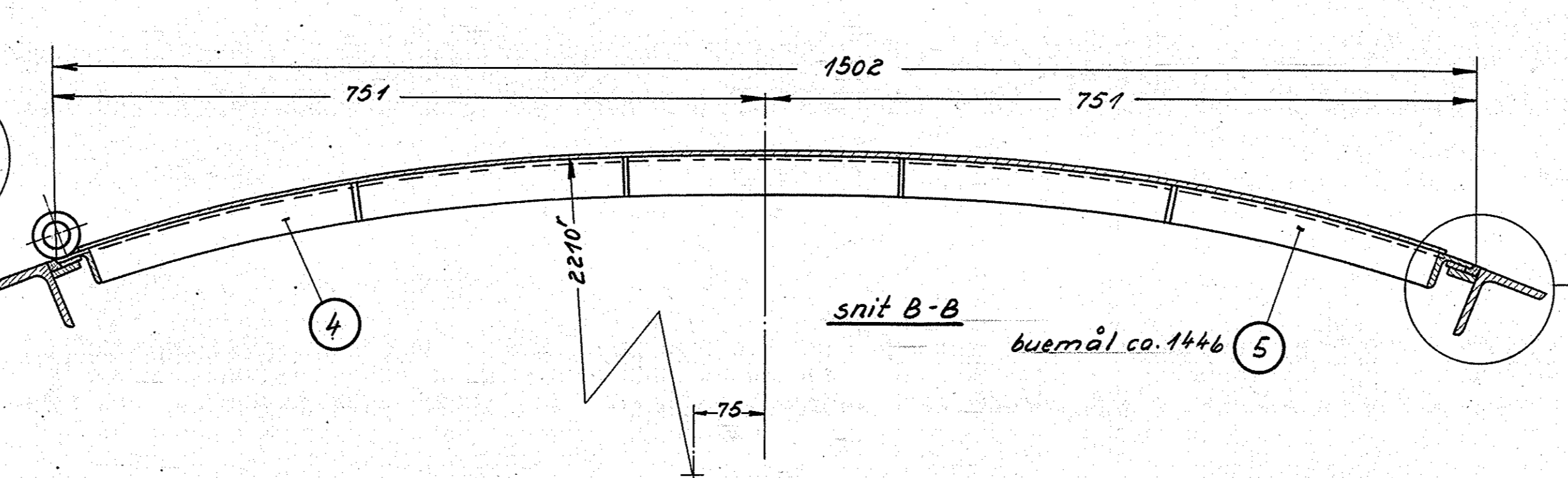
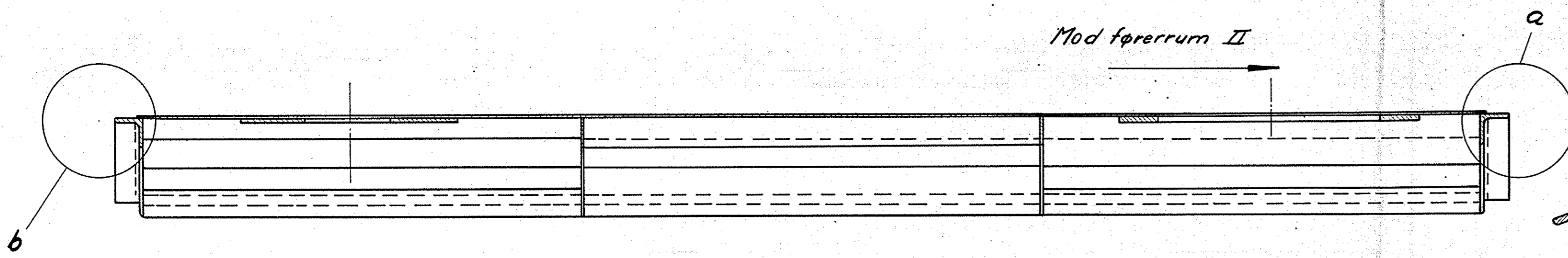
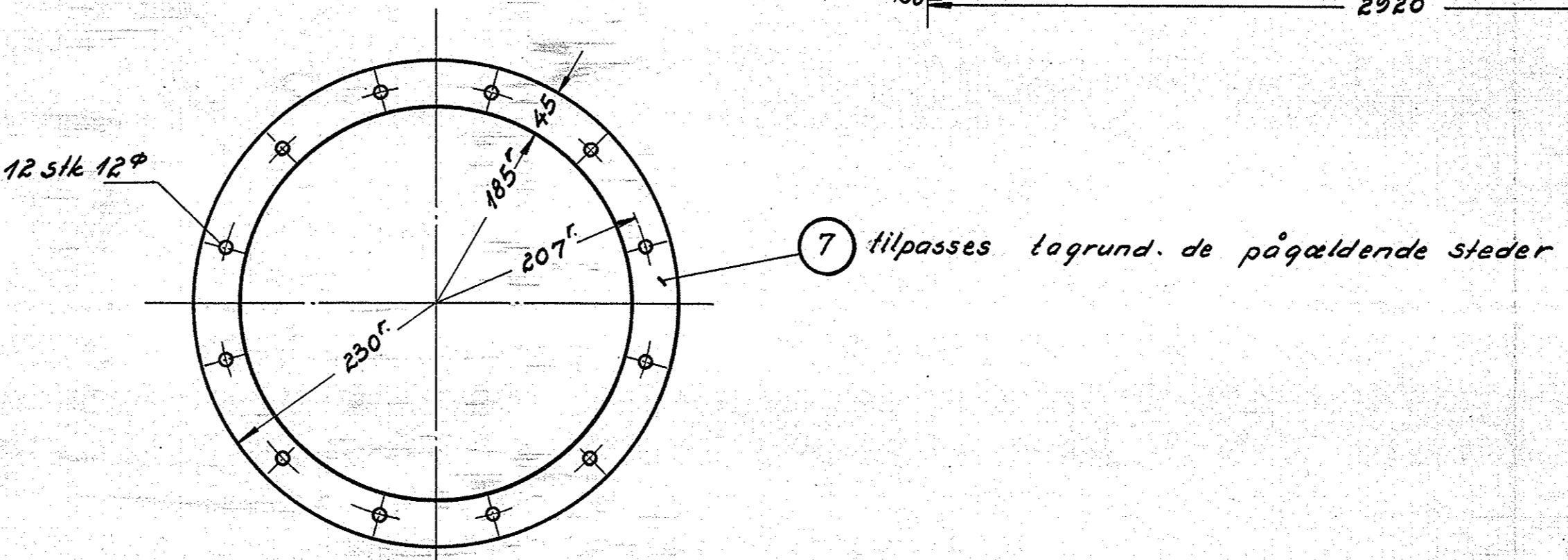
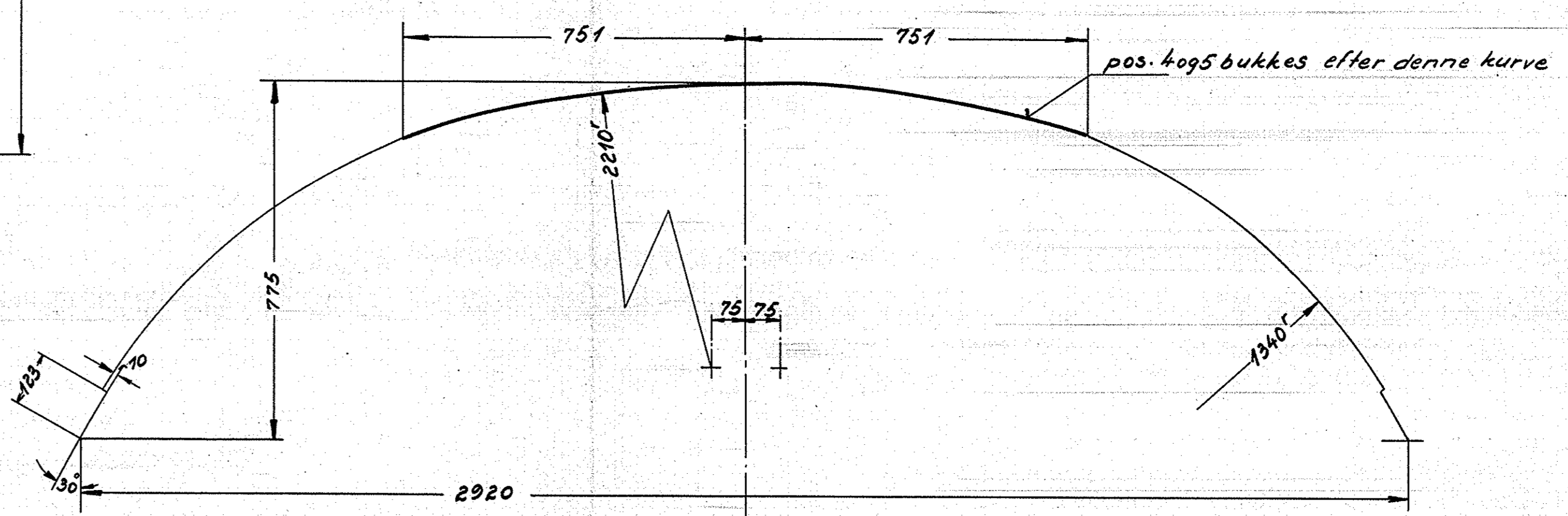
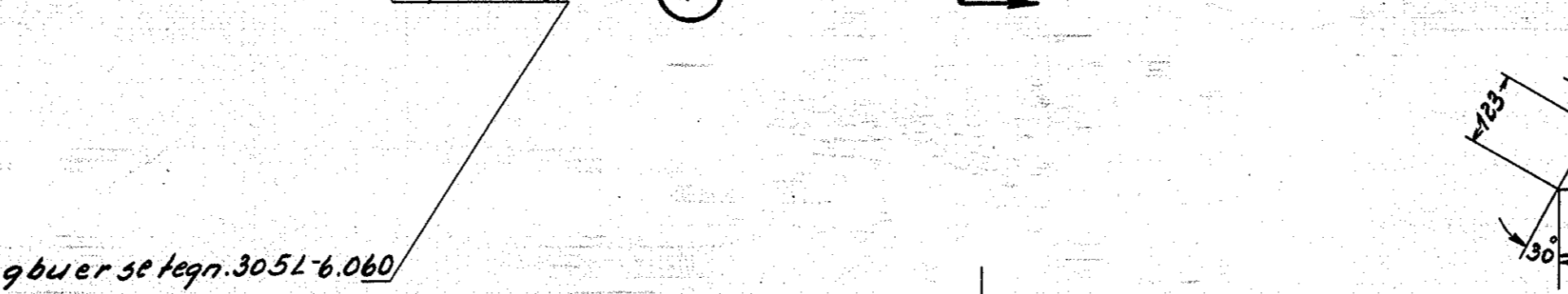
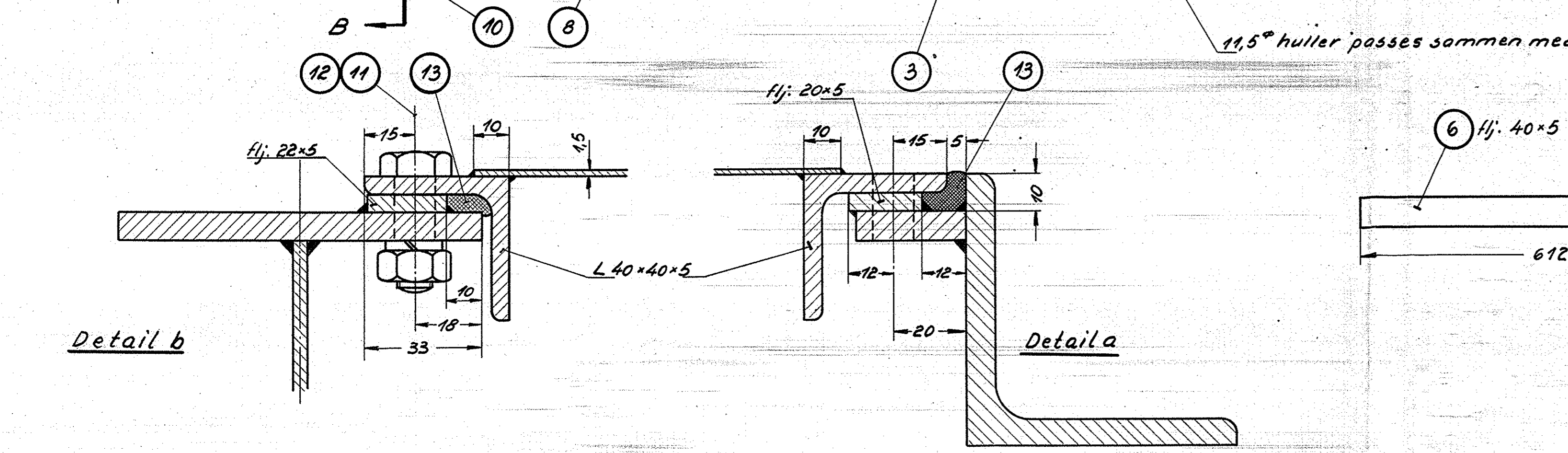


Mod førerrum II



6° huller - 24stk. opmærkes og børes efter pos. I alt 3/16" WG møtrik hæltes under hvert hul.



Vægt/lokomotiv 85 kg
Ang. plac. se tegn. 305L-6.060.

| | | | | | | |
|----|---------------|--------------------|----|---------|------------------------|--|
| 2 | gummipatning | 500 x 230 x 1 | 20 | Gummi | 525-500-1 | |
| 40 | fjæderskive | 3/16" | 19 | fjæd. | magasin | |
| 48 | skruer | 3/16" WG x 15 | 10 | st. 34 | " | |
| 48 | møtrik | 3/16" WG | 11 | st. 34 | magasin | |
| 8 | hjørner | 1/4 x 1/5 x 2 | 16 | st. 10 | 100 x 125 x 2 | |
| 2 | konsol | 3/4 x 5/8 x 2 | 15 | " | 725 x 650 x 2 | |
| 2 | sugentilføjer | | 14 | st. 10 | Skandia ud 74 | |
| | gummiliste | 10 x 12 | 13 | st. 10 | 10 x 12 x 1020 | |
| 70 | fjæderskive | 3/16" | 12 | fj. st. | magasin | |
| 70 | bolt, sort | 3/8" x 30 | 11 | st. 34 | " | |
| 6 | øje | 10" x 113 | 10 | st. 00 | 40" x 800 | |
| 1 | plade | 891 x 630 x 15 | 9 | st. 00 | 950 x 670 x 15 | |
| 1 | plade | 1868 x 1470 x 15 | 8 | " | 1890 x 1500 x 15 | |
| 2 | forstærkn. | 40 x 570 x 5 | 7 | " | 940 x 475 x 5 | |
| 10 | fladjern | 40 x 5 x 612 | 6 | " | fj. 40 x 5 x 6200 | |
| 2 | fladjern | 40 x 5 x 1446 | 5 | " | fj. 40 x 5 x 3000 | |
| 2 | vinkeljern | 40 x 40 x 5 x 1526 | 4 | " | vj. 40 x 40 x 5 x 3200 | |
| 2 | " | 40 x 40 x 5 x 1928 | 3 | " | vj. 40 x 40 x 5 x 3900 | |
| 2 | " | 40 x 40 x 5 x 688 | 2 | " | vj. 40 x 40 x 5 x 1400 | |
| 2 | vinkeljern | 40 x 40 x 5 x 951 | 1 | st. 00 | vj. 40 x 40 x 5 x 1920 | |

| | | | |
|---|--|---|--|
| Tegningens benævnelse Diesel-el. 1500 hk lokomotiv. | | Tegningens nummer 16186. | |
| Lemme i tag over kedel og reguleringsmotor. | | Tegningens nummer 305L-6.040. | |

FRICHS